



Official Website
官方网站

佛山市顺德区骏亚机械有限公司
地址：广东省佛山市顺德区伦教世龙大道16号 电话：0757-2788 9111 传真：0757-2362 2255

FOSHAN SHUNDE JUNYA MACHINERY CO., LTD

Add: No. 16, Shilong Road, Lunjiao, Shunde, Foshan, Guangdong, China
Tel: +86-757-2788 9111 Fax: +86-757-2362 2255 E-mail: junyajixie@163.com

WWW.CHINAJUNYA.COM

中文域名：www.骏亚.com

本公司保留产品设计与规格改进权利，届时恕不另行通知，所有资料经过仔细核对，以求准确，如有印刷错误产生失误，本公司不承担因此产生的后果，印刷过程中可能令资料和实物有轻微差别，请以实物为准，本公司保留最终解释权。

Junya reserves the right of improving product design and product specifications without notice. All materials are carefully checked to ensure correction. If happens printing errors, Junya will not assume the consequences. Printing process may make slight difference between materials and actual products. Please be subject to the actual products. Junya reserves final interpretation.

CHINA JUNYA

中国骏亚 | 玻璃清洗设备专业制造商

WWW.CHINAJUNYA.COM

2019 Product Catalogue

JUNYA
Glass Washing Machine Specialist

COMPANY INTRODUCTION

公司简介

佛山市顺德区骏亚机械有限公司（中国骏亚）是一家以玻璃清洗机为主导，集开发、制造、销售于一体的专业厂家。通过全体员工数年的共同努力，把骏亚玻璃清洗机打造成为行业中有代表性的品牌。

主导产品现已成为行业中的精品，是玻璃生产厂家及玻璃机械生产厂家首选配套设备。骏亚以满足玻璃深加工厂家需要为己任，凭借自身的技术研发力量，并结合国内外先进技术制造出的高科技，高精度，高效率的玻璃深加工设备。好的产品需要专业出色的服务，骏亚在发展提升产品质量的同时，建立了一支完善的销售队伍，成员均由技术经验丰富，表达能力优秀，执行能力过硬的年轻人组成，熟练售前操作人员培训，集中现场安装调试，售后跟踪一条龙服务流程，为客户生产提供了有力的保障。

骏亚将继续努力研发先进技术，建立更完善的服务团队，回报客户的热情、支持，携手共创美好生活。

Foshan Shunde Junya Machinery Co., Ltd (China Junya) is a professional manufacturer, focused on developing, manufacturing and selling glass washing and drying machine. Junya has become one of the representative brand in the glass industry through all staff's efforts in many years.

Junya main machines have become the typical products in the glass industry, which are the preferred products of glass manufacturers and glass machinery manufacturers. Junya is dedicated to satisfy the needs of glass deep processing manufactures. Junya produces machines in high-tech, high-precision and high-efficiency by combing our own and other domestic and abroad advanced technologies. During develop and improve good quality machine, Junya built one sales team with rich technical experience, outstanding communication skills and execution power. We can provide strong supports to our customers by operator training, machine installation and testing on site, after-sales tracing service.

We will continue to research advanced technology, set up better service team to pay back customers' support, and enjoy wonderful life together.



CHINA JUNYA
GLASS WASHING
MACHINE SPECIALIST

中国骏亚 | 玻璃清洗设备专业制造商

公益 关爱环境，共筑低碳生活

Junya/ Common Well
Eco-friendly Spirit

我们是地球的公民，
地球是我们共同生活的家园，
每一片绿色带来干净的空气，
每一片绿色带来舒适的环境。

We are citizens of the earth.
The earth is our common home.
Every piece of the green brings clean air,
every piece of the green
brings comfortable environment.



骏亚人和蓝天有个约定：
种一片心愿，献一份爱心，
尽一份社会责任。

Junya people has an promise
with the blue sky:
plant a wish,
offer a love and do a soical responsibility

创新 创新中持续超越

Junya/Profession
Aiming High and Improving



ENTERPRISE CULTURE

企业文化

务实：立足之本

以人为本，以客为先，兢兢业业，脚踏实地。在市场竞争中寻求企业发展与项目开发的适宜之路，以产品和服务创造价值，提升公司的市场竞争力。

卓越：追求之境

志向远大，目标明确，追求卓越，永无止境，超越自我是骏亚孜孜以求的目标，更是公司赢得竞争优势的精神动力。

规范：经营之道

规范管理，诚信经营，循法尚德，回馈社会。建立健全的公司管理结构，运行机制与业务流程，秉持专业的精神和敬业的作风，认真履行一个企业公民的社会责任，赢得市场的肯定。

Base: People-oriented

People-oriented, Customer first and Pragmatic. We manage to pave a way appropriate for corporate and project development. Besides, we enhance our competitiveness through creating values on both our products and services which is necessary in this competitive edge.

Excellence: Pursuit

Junya always lays strong emphasis on a far-vised view, a clear goal, and pursuit of excellence. Diligence, the objective of Junya, becomes the essence for Junya to be more advantageous and competitive.

Feature: Business Management

Junya features in standardized management, obeying the laws, observing moral principles and making contributions to the society with integrity. Junya has established a sound managerial structure, operation mechanism and business process. It wins the trust of the market for its professionalism, dedication and social responsibility as a citizen.



骏亚担负的使命：
创全球知名品牌
为用户提供更优质的产品

Create a world-renowned brand to provide users with better products

JUNYA MARKETING NETWORK

营销网络

创造全球化品牌

骏亚紧扣互联网时代的需求适应未来发展，掌控专利标准的话语权，进一步发展全球营销网络创造更多的用户资源。同时，以“三位一体”的本土化模式整合全球研发、制造、营销资源，创造全球化品牌。骏亚在全球市场有强大的市场营销网络优势，并与互联网进行充分的融合，以“零距离下的虚实网融合”创出第一时间满足用户第一需求的竞争力。“虚网”指互联网，通过网络形成用户黏度；“实网”指营销网、物流网、服务网，第一时间送达用户满意。通过国外的渠道销售骏亚产品，形成了资源互换，加快了骏亚进军世界市场的步伐。

目标和使命

建立世界先进水平的技术研发机构以及先进的资源整合中心，整合利用全球优势资源，为骏亚在全球的发展服务，支持企业的全球化的品牌战略。

Create A Global Brand

Junya is closely linked to needs of Internet times to adapt development in future, and controls the discourse power of the patent standard. At the same time, Junya integrates global R&D, manufacturer and marketing resource to create a global brand in the localization mode of “trinity”. Junya has a strong marketing network advantage in global market and fully connected with Internet. Through “no distance connection”, with visional network and actual network, Junya creates competitive strength of meeting customers' most urgent needs at the soonest time. “Visional Network” means Internet; through Internet, Junya finds and connects with customers. “Actual Network” means marketing network, logistics network and service network; through them, Junya meets customers' needs at the soonest time.

Target And Mission

Junya research institute common mission is to establish a world advanced technical R&D institution as well as resource integration centre which can provide Junya's development service in the world, and can support Junya's global brand strategy. Junya research institute mission is “to provide core technical support for Junya companies to create a global well-known brand.”

中国国际玻璃工业技术展览会

China International Glass Industrial Technical Exhibition

勃发 光荣与梦想一起飞翔

Junya/Properous
With Glory and Dream



22nd
2011
第22届展览会



23nd
2012
第23届展览会



24nd
2013
第24届展览会



25nd
2014
第25届展览会



26nd
2015
第26届展览会



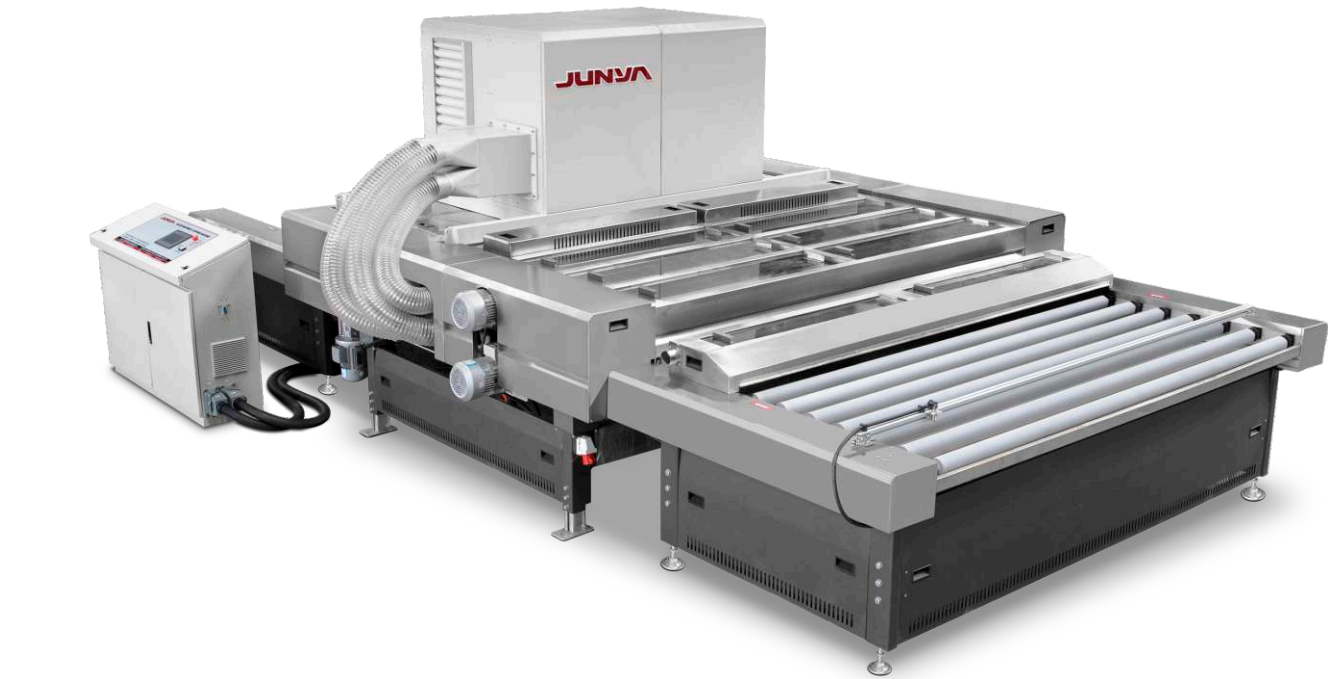
27nd
2016
第27届展览会



28nd
2017
第28届展览会

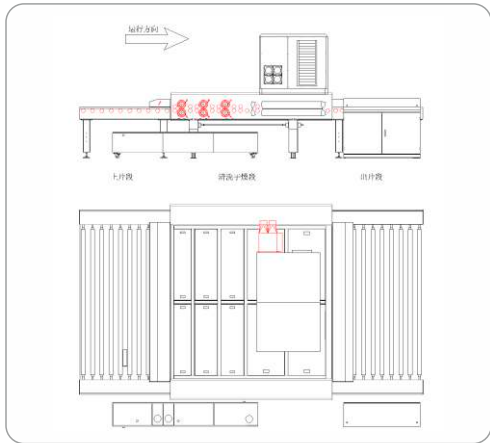


29nd
2018
第29届展览会



高速节能清洗机系列 (高配)

HIGH SPEED ENERGY-EFFICIENT
GLASS WASHING MACHINE SERIES (HIGH CONFIGURATION)



产品特性

主传动为齿轮传动、变频调速、数字显示、清洗部毛刷辊转动分别由上、下两组电机独立驱动，皮带传动、变频调速，转动速度平稳、使用寿命更长。

清洗部、风干部整体升降、最大升程为：350mm、便于清洗和保养。

三对大毛刷配置、可洗LOW-E玻璃、普通镀膜和阳光镀膜玻璃。

二对特制风刀配置、风力大、风干效果好、带加热系统。

铝合金拼装式结构。

Product Characteristics

- 1. Main drive is gear drive, inverter speed control and digital display. Brush rollers of washing section are drove by upper and lower motors with belts, which has smooth speed and long service life.
- 2. Washing section and drying section can be rose up max. to 350mm as a whole, which is convenient to wash and maintain.
- 3. The machine has three pairs of brushes, which can be used for washing LOW-E glass, ordinary coated and solar glass.
- 4. The machine has two pairs of air knife which has large wind and good drying effect with the air heating system.
- 5. The machine structure is aluminum alloy assembled structure.

技术参数 Technical Parameters

序号	标识名称 Description	Model	JYX-3000CGT	JYX-2500CGT	JYX-2000CGT	JYX-1700CGT	JYX-1300CGT
1	传动速度 Working Speed		0-7m/min	0-15m/min	0-15m/min	0-15m/min	0-15m/min
2	最大尺度 Max. Width		3100mm	2600mm	2100mm	1800mm	1400mm
3	最小尺寸 Min. Size		500X500mm	400X400mm	400x400mm	400x400mm	400x400mm
4	加工厚度 Thickness Range		3-25	3-25	3-25	3-25	3-25
5	总功率 Total Power		48	45	45	42	37
6	设备尺寸 Machine Size		6370X5000X2840	6270X4500X2840	6070X4000X2840	6070X3700X2840	5770X3300X2840
7	重量 Machine Weight		4940	3940	3320	2920	2320
8	日光灯检测灯 Light Inspection		●	●	●	●	●
9	气缸 Cylinder		●	●	●	●	●
10	电源 Power Supply		●	●	●	●	●
11	热风开关 Air Heater Switch		●	●	●	●	●
12	风机开关 Blower Switch		●	●	●	●	●
13	高度数字显示 Height Digital Display		数字显示 Digital Display	数字显示 Digital Display	数字显示 Digital Display	数字显示 Digital Display	数字显示 Digital Display
14	水热开关 Water Heater Switch		○	○	○	○	○
15	水泵开关 Water Pump Switch		●	●	●	●	●
16	毛刷 Brush Diameter		Φ170	Φ160	Φ160	Φ160	Φ160
17	最大行程 Max. Height Limit		350	350	350	350	350
18	胶辊尺寸 Rubber Roller Diameter		Φ75	Φ75	Φ75	Φ75	Φ75
19	传动变频 Speed Inverter		●	●	●	●	●
20	毛刷变频 Brush Inverter		●	●	●	●	●
21	风机变频 Blower Inverter		●	●	●	●	●
22	PLC 触屏 PLC Touch Screen		●	●	●	●	●
23	LOW-E 功能 LOW-E Function	LOW-E	●	●	●	●	●
24	工作水平高度 Working Height		900	900	900	900	900

●表示有此配备
MEAN"YES" | ○表示选装配备
MEAN"OPTIONAL" | ✕表示无此配备
MEAN"NO"



高速节能清洗机 系列(钢化前)

HIGH SPEED ENERGY-EFFICIENT
GLASS WASHING MACHINE SERIES (BEFORE TEMPERING)

产品特性

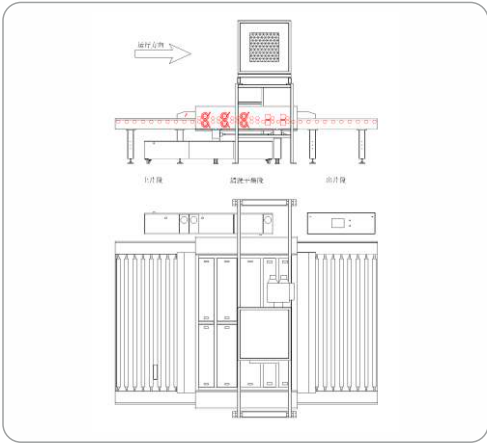
主传动为齿轮传动、变频调速、数字显示、清洗部毛刷辊分别由上、下两组电机独立驱动，皮带传动、变频调速，转动速度平稳、使用寿命更长。

清洗部、风干部整体升降、最大升程为350mm、便于清洗和保养。

三对大毛刷配置、可洗LOW-E玻璃、普通镀膜和阳光镀膜玻璃。

二对特制风刀配置、风力大、风干效果好、带加热系统。

铝合金拼装式结构。



Product Characteristics

1. Main drive is gear drive, inverter speed control and digital display. Brush rollers of washing section are drove by upper and lower motors with belts, which has smooth speed and long service life.
2. Washing section and drying section can be rose up max. to 350mm as a whole, which is convenient to wash and maintain.
3. The machine has three pairs of brushes , which can be used for washing LOW-E glass, ordinary coated and solar glass.
4. The machine has two pairs of air knife which has large wind and good drying effect with the air heating system.
5. The machine structure is aluminum alloy assembled structure.

技术参数 Technical Parameters

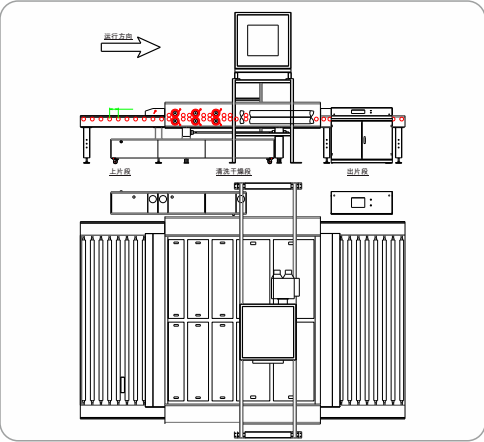
序号	标识名称 Description	Model	JYX-3600C	JYX-3300C	JYX-3000C	JYX-2500C	JYX-2000C	JYX-1700C	JYX-1300C
1	传动速度 Working Speed		0-5m/min	0-7m/min	0-7m/min	0-12m/min	0-12m/min	0-12m/min	0-12m/min
2	最大尺度 Max. Width		3600mm	3300mm	3000mm	2500mm	2000mm	1700mm	1300mm
3	最小尺寸 Min. Size		500X500mm	500X500mm	500X500mm	400x400mm	400x400mm	400x400mm	400x400mm
4	加工厚度 Thickness Range		3-25mm	3-25mm	3-25mm	3-25mm	3-25mm	3-25mm	3-25mm
5	总功率 Total Power		45	38	38	35	35	32	27
6	设备尺寸 Machine Size		5500X5800X2840	5500X5400X2840	5500X5000X2840	5500X4500X2840	5500X4000X2840	5500X3700X2840	5500X3400X2840
7	重量 Machine Weight		4520	4220	4220	3840	3220	2820	2220
8	日光灯检测灯 Light Inspection		●	●	●	●	●	●	●
9	气缸 Cylinder		●	●	●	●	●	●	●
10	电源 Power Supply		●	●	●	●	●	●	●
11	热风开关 Air Heater Switch		●	●	●	●	●	●	●
12	风机开关 Blower Switch		●	●	●	●	●	●	●
13	高度数字显示 Height Digital Display		数字显示 Digital Display	数字显示 Digital Display	数字显示 Digital Display	数字显示 Digital Display	数字显示 Digital Display	数字显示 Digital Display	数字显示 Digital Display
14	水泵开关 Water Pump Switch		●	●	●	●	●	●	●
15	毛刷 Brush Diameter		Φ170	Φ170	Φ170	Φ160	Φ160	Φ160	Φ160
16	最大行程 Max. Height Limit		350	350	350	350	350	350	350
17	胶辊尺寸 Rubber Roller Diameter		Φ75	Φ75	Φ75	Φ75	Φ75	Φ75	Φ75
18	传动变频 Speed Inverter		●	●	●	●	●	●	●
19	毛刷变频 Brush Inverter		●	●	●	●	●	●	●
20	PLC 触屏 PLC Touch Screen		○	○	○	○	○	○	○
21	LOW-E 功能 LOW-E Function		●	●	●	●	●	●	●
22	工作水平高度 Working Height		900	900	900	900	900	900	900

● 表示有此配备
MEAN"YES" | ○ 表示选装配备
MEAN"OPTIONAL" | ✕ 表示无此配备
MEAN"NO"



高速节能清洗机系列（磨边后）

HIGH SPEED ENERGY-EFFICIENT
GLASS WASHING MACHINE SERIES (AFTER GRINDING)



产品特性

主传动为齿轮传动、变频调速、数字显示、清洗部毛刷辊转动分别由上、下两组电机独立驱动，皮带传动、变频调速，转动速度平稳、使用寿命更长。

清洗部、风干部整体升降、最大升程为350mm、便于清洗和保养。

三对大毛刷配置、可洗LOW-E玻璃、普通镀膜和阳光镀膜玻璃。

二对特制风刀一直一斜配置、风力大、风干效果好、带加热系统。

铝合金拼装式结构。

Product Characteristics

- 1. Main drive is gear drive, inverter speed control and digital display. Brush rollers of washing section are drove by upper and lower motors with belts, which has smooth speed and long service life.
- 2. Washing section and drying section can be rose up max. to 350mm as a whole, which is convenient to wash and maintain.
- 3. The machine has three pairs of brushes , which can be used for washing LOW-E glass, ordinary coated and solar glass.
- 4. The machine has two pairs of air knife (one straight, one inclined), which has large wind and good drying effect with the air heating system.
- 5. The machine structure is aluminum alloy assembled structure.

技术参数 Technical Parameters

序号	标识名称 Description	Model	JYX-3300CG	JYX-3000CG	JYX-2500CG	JYX-2000CG	JYX-1700CG	JYX-1300CG
1	传动速度 Working Speed		0-7m/min	0-7m/min	0-15m/min	0-15m/min	0-15m/min	0-15m/min
2	最大尺度 Max. Width		3300mm	3000mm	2600mm	2100mm	1800mm	1400mm
3	最小尺寸 Min. Size		500X500mm	500X500mm	400X400mm	400x400mm	400x400mm	400x400mm
4	加工厚度 Thickness Range		3-25	3-25	3-25	3-25	3-25	3-25
5	总功率 Total Power		55	55	45	45	42	37
6	设备尺寸 Machine Size		7230X5300X2840	6370X5000X2840	6270X4500X2840	6070X4000X2840	6070X3700X2840	5770X3300X2840
7	重量 Machine Weight		4820	4220	3840	3220	2820	2220
8	日光灯检测灯 Light Inspection		●	●	●	●	●	●
9	气缸 Cylinder		●	●	●	●	●	●
10	电源 Power Supply		●	●	●	●	●	●
11	热风开关 Air Heater Switch		●	●	●	●	●	●
12	风机开关 Blower Switch		●	●	●	●	●	●
13	高度数字显示 Height Digital Display		数字显示 Digital Display	数字显示 Digital Display	数字显示 Digital Display	数字显示 Digital Display	数字显示 Digital Display	数字显示 Digital Display
14	水热开关 Water Heater Switch		○	○	○	○	○	○
15	水泵开关 Water Pump Switch		●	●	●	●	●	●
16	毛刷 Brush Diameter		Φ170	Φ170	Φ160	Φ160	Φ160	Φ160
17	最大行程 Max. Height Limit		350	350	350	350	350	350
18	胶辊尺寸 Rubber Roller Diameter		Φ75	Φ75	Φ75	Φ75	Φ75	Φ75
19	传动变频 Speed Inverter		●	●	●	●	●	●
20	毛刷变频 Brush Inverter		●	●	●	●	●	●
21	风机变频 Blower Inverter		○	○	○	○	○	○
22	PLC 触屏 PLC Touch Screen		○	○	○	○	○	○
23	LOW-E 功能 LOW-E Function		●	●	●	●	●	●
24	工作水平高度 Working Height		900	900	900	900	900	900

● 表示有此配备
MEAN"YES" | ○ 表示选装配备
MEAN"OPTIONAL" | ✕ 表示无此配备
MEAN "NO"



镀膜、镀膜、喷绘前清洗机 系列

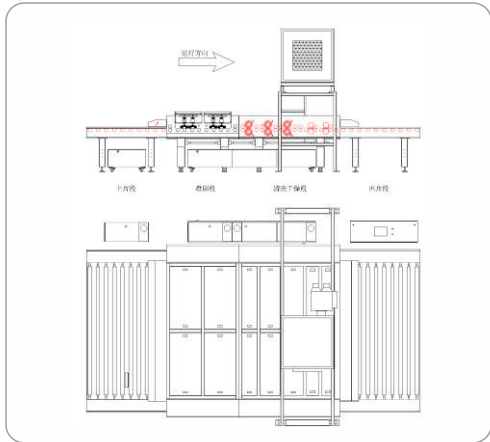
GLASS WASHING MACHINE SERIES FOR GLASS BEFORE COATING, MIRROR COATING AND PRINTING.

产品特性

玻璃清洗机采用卧式结构、用于平板玻璃的清洗与干燥,适用镀膜、镀膜前清洗玻璃。

主要由进片段、盘刷段、清洗段、干燥段、出片段组成。主传动为轴传动、变频器调节速度。

整机按四级清洗、三对毛刷、四个水箱设计、二组对单面盘刷清洗 设计、配用高压力泵。



Product Characteristics

1. Horizontal glass washing machine is used for flat glass, especially for glass before coating, mirror coating and printing.
2. The machine mainly consists of loading section, washing section, drying section and unloading section.
3. Main drive is gear drive and inverter speed control.
4. The machine is designed as four-step washing and equipped with three pairs of brushes and four tanks. The machine also has two pairs of single side disk brushes and high pressure pump.

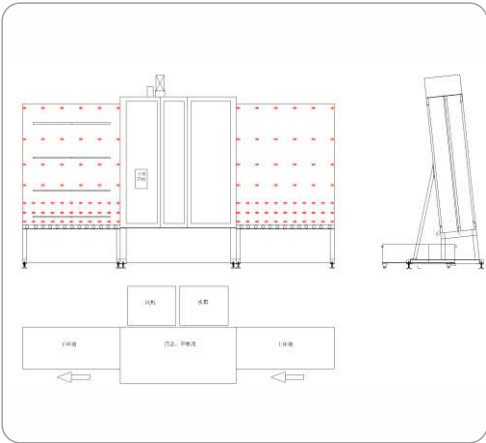
技术参数 Technical Parameters

序号	标识名称 Description	Model	JYX-3300CD	JYX-3000CD	JYX-2500CD	JYX-2000CD	JYX-1700CD	JYX-1300CD
1	传动速度 Working Speed		0-5m/min	0-5m/min	0-5m/min	0-5m/min	0-5m/min	0-5m/min
2	最大尺度 Max. Width		3400mm	3100mm	2600mm	2100mm	1800mm	1400mm
3	最小尺寸 Min. Size		400X400mm	400X400mm	400X400mm	400X400mm	400X400mm	400X400mm
4	加工厚度 Thickness Range		2-19	2-19	2-19	2-19	2-19	2-19
5	总功率 Total Power		65	65	55	55	52	47
6	设备尺寸 Machine Size		9370X5500X2840	8510X5200X2840	8410X3700X2840	8210X3200X2840	8210X2900X2840	7910X2500X2840
7	重量 Machine Weight		8500	7500	6500	5500	4500	3500
8	日光灯检测灯 Light Inspection		●	●	●	●	●	●
9	气缸 Cylinder		●	●	●	●	●	●
10	电源 Power Supply		●	●	●	●	●	●
11	热风开关 Air Heater Switch		●	●	●	●	●	●
12	风机开关 Blower Switch		●	●	●	●	●	●
13	高度数字显示 Height Digital Display		数字显示 Digital Display	数字显示 Digital Display	数字显示 Digital Display	数字显示 Digital Display	数字显示 Digital Display	数字显示 Digital Display
14	水热开关 Water Heater Switch		○	○	○	○	○	○
15	水泵开关 Water Pump Switch		●	●	●	●	●	●
16	毛刷 Brush Diameter		Φ170	Φ170	Φ160	Φ160	Φ160	Φ160
17	最大行程 Max. Height Limit		350	350	350	350	350	350
18	胶辊尺寸 Rubber Roller Diameter		Φ75	Φ75	Φ75	Φ75	Φ75	Φ75
19	传动变频 Speed Inverter		●	●	●	●	●	●
20	毛刷变频 Brush Inverter		●	●	●	●	●	●
21	风机变频 Blower Inverter		●	●	●	●	●	●
22	PLC 触屏 PLC Touch Screen		●	●	●	●	●	●
23	盘刷 Disk Brush		●	●	●	●	●	●
24	过滤器 Water Filter		●	●	●	●	●	●
25	工作水平高度 Working Height		900	900	900	900	900	●

● 表示有此配备
MEAN"YES" | ○ 表示选装配备
MEAN"OPTIONAL" | ✕ 表示无此配备
MEAN "NO"

立式清洗机 系列

VERTICAL GLASS WASHING MACHINE SERIES



技术参数 Technical Parameters

序号	标识名称 Description	Model	JYX-2500L	JYX-2000L	JYX-1600L
1	传动速度 Working Speed		0-7m/min	0-7m/min	0-7m/min
2	最大尺度 Max. Width		2500mm	2000mm	1600mm
3	最小尺寸 Min. Size		500X300mm	500X300mm	500X300mm
4	加工厚度 Thickness Range		3-12	3-12	3-12
5	总功率 Total Power		27	23	22
6	设备尺寸 Machine Size		6400X2400X4200	6000X2000X3200	6000X2000X2800
7	重量 Machine Weight		3500	2500	2000
8	日光灯检测灯 Light Inspection		●	●	●
9	气缸 Cylinder		●	●	●
10	电源 Power Supply		●	●	●

序号	标识名称 Description	Model	JYX-2500L	JYX-2000L	JYX-1600L
11	热风开关 Air Heater Switch		●	●	●
12	风机开关 Blower Switch		●	●	●
13	水泵开关 Water Pump Switch		●	●	●
14	毛刷 Brush Diameter		Φ150	Φ150	Φ150
15	胶辊尺寸 Rubber Roller Diameter		Φ80	Φ75	Φ75
16	传动变频 Speed Inverter		●	●	●
17	PLC 触屏 PLC Touch Screen		○	○	○
18	LOW-E 功能 LOW-E Function	LOW-E	●	●	●
19	工作水平高度 Working Height		750	750	750

● 表示有此配备 | ○ 表示选装配备 | ✕ 表示无此配备
MEAN"YES" | MEAN"OPTIONAL" | MEAN"NO"

产品特性

立式玻璃清洗机是建筑、建材、装饰等行业生产加工中空玻璃的专用关键设备，适用于厚度3~12mm、平板玻璃的清洗。

机主要由清洗箱、传动系统、机架、水箱、送风箱、电气控制等部分组成。整个清洗过程全自动完成，不需人工操作。

Product Characteristics

- 1. Vertical glass washing machine is key equipment of manufacturing and processing insulating glass in architecture, building material and decoration industries. The machine can wash 3-12mm thickness flat glass.
- 2. The machine mainly consists of washing section, drying section, drive system, machine frame, tank, blower, electric control system and other parts. During the whole washing process, the machine works automatically, and no need manual operation.

清洗机简易风刀 系列

GLASS WASHING MACHINE SIMPLE AIR
KNIFE TYPE SERIES

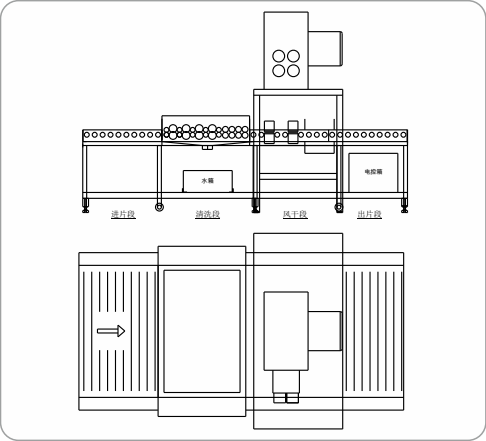


技术参数 Technical Parameters

序号	标识名称 Description	Model	JYX-1600CF	JYX-1200CF
1	传动速度 Working Speed		0-3.5m/min	0-3.5m/min
2	最大尺度 Max. Width		1600mm	1200mm
3	最小尺寸 Min. Size		400X400mm	400X400mm
4	加工厚度 Thickness Range		3-12	3-12
5	总功率 Total Power		23	18
6	设备尺寸 Machine Size		4100X2100X2300	3300X1750X2300
7	重量 Machine Weight		2000	1500
8	日光灯检测灯 Light Inspection		●	●
9	电源 Power Supply		●	●
10	热风开关 Air Heater Switch		●	●

序号	标识名称 Description	Model	JYX-1600CF	JYX-1200CF
11	风机开关 Blower Switch		●	●
12	水热开关 Water Heater Switch		○	○
13	水泵开关 Water Pump Switch		●	●
14	毛刷 Brush Diameter		Φ80	Φ80
15	胶辊尺寸 Rubber Roller Diameter		Φ50	Φ50
16	传动 Speed		无级变速 Stepless Regulation	无级变速 Stepless Regulation
17	工作水平高度 Working Height		830	830

● 表示有此配备 | ○ 表示选装配备 | ✕ 表示无此配备
MEAN"YES" | MEAN"OPTIONAL" | MEAN "NO"



产品特性

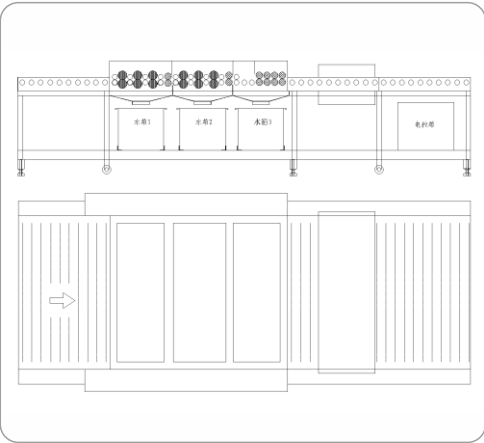
风刀型玻璃清洗机采用卧式结构、用于平板玻璃的清洗与干燥。
主要由进片段、清洗段、出片段组成。
主传动为链条传动、无级调节速度。
整机按一级清洗、一个水箱设计、配有高压力泵。
四对毛刷、二对风刀配置。

Product Characteristics

- 1. Simple air knife type horizontal glass washing machine is used for washing and drying flat glass.
- 2.The machine mainly consists of loading section, washing section, drying section and unloading section.
- 3. Main drive is chain drive and stepless speed regulation
- 4. The machine is designed as one-step washing and equipped with one water tank and high pressure pump.
- 5. The machine has four pairs of brushes and two pairs of air knife.

丝印类清洗机 系列 (丝印前)

SCREEN PRINTING GLASS WASHING MACHINE SERIES
(BEFORE SCREEN PRINTING)



技术参数 Technical Parameters

序号	标识名称 Description	Model	JYX-1600C3	JYX-1200C3
1	传动速度 Working Speed		0-3.5m/min	0-3.5m/min
2	最大尺度 Max. Width		1600mm	1200mm
3	最小尺寸 Min. Size		200X200mm	150X150mm
4	加工厚度 Thickness Range		3-12	3-12
5	总功率 Total Power		15	12
6	设备尺寸 Machine Size		4660x2150x1100	3800x1750x1100
7	重量 Machine Weight		1800	1500
8	日光灯检测灯 Light Inspection		●	●
9	电源 Power Supply		●	●
10	热风开关 Air Heater Switch		●	●
11	风机开关 Blower Switch		●	●
12	水泵开关 Water Pump Switch		●	●
13	毛刷 Brush Diameter		Φ80	Φ80
14	胶辊尺寸 Rubber Roller Diameter		Φ50	Φ50
15	传动变频 Speed Inverter		●	●
16	工作水平高度 Working Height		830	830

● 表示有此配备
MEAN "YES"

○ 表示选装配备
MEAN "OPTIONAL"

✕ 表示无此配备
MEAN "NO"

产品特性

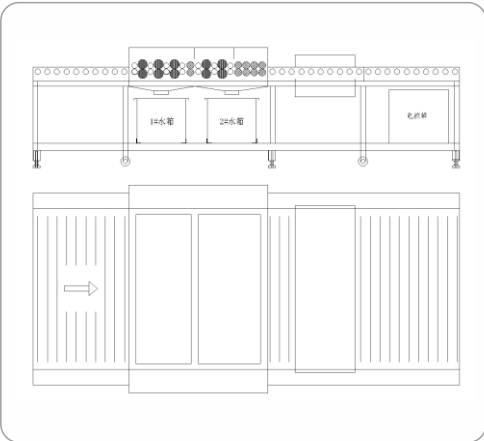
玻璃清洗机采用卧式结构、用于平板玻璃的清洗与干燥。
主要由进片段、清洗段、干燥段、出片段组成。
主传动为链条传动、变频调速。
整机按三级清洗、三个水箱设计、配用高压力泵。
六对毛刷、五对海绵辊配置。

Product Characteristics

1. Horizontal glass washing machine is used for flat glass washing and drying.
2. The machine mainly consists of loading section, washing section, drying section and unloading section.
3. Main drive is chain drive and inverter speed control.
4. The machine is designed as three-step washing and equipped with three water tanks and high pressure pump.
5. The machine has six pairs of brushes and five pairs of sponge rollers.

丝印类清洗机 系列 (丝印后)

SCREEN PRINTING GLASS WASHING MACHINE SERIES
(AFTER SCREEN PRINTING)



技术参数 Technical Parameters

序号	标识名称 Description	Model	JYX-1600C2	JYX-1200C2
1	传动速度 Working Speed		0-3.5m/min	0-3.5m/min
2	最大尺度 Max. Width		1600mm	1200mm
3	最小尺寸 Min. Size		200X200mm	150X150mm
4	加工厚度 Thickness Range		3-12	3-12
5	总功率 Total Power		15	12
6	设备尺寸 Machine Size		4260X2100X1100	3600x1750x1100
7	重量 Machine Weight		1100	900
8	日光灯检测灯 Light Inspection		●	●
9	电源 Power Supply		●	●
10	热风开关 Air Heater Switch		●	●
11	风机开关 Blower Switch		●	●
12	水泵开关 Water Pump Switch		●	●
13	毛刷 Brush Diameter		Φ80	Φ80
14	胶辊尺寸 Rubber Roller Diameter		Φ50	Φ50
15	传动 Speed		无级变速 Stepless Regulation	无级变速 Stepless Regulation
16	工作水平高度 Working Height		830	830

● 表示有此配备
MEAN "YES"

○ 表示选装配备
MEAN "OPTIONAL"

✕ 表示无此配备
MEAN "NO"

产品特性

玻璃清洗机采用卧式结构、用于平板玻璃的清洗与干燥。
主要由进片段、清洗段、干燥段、出片段组成。
主传动为链条传动、无级调节速度。
整机按二级清洗、二个水箱设计、配用高压力泵。
五对毛刷、四对海绵辊配置。

Product Characteristics

1. Horizontal glass washing machine is used for flat glass washing and drying.
2. The machine mainly consists of loading section, washing section, drying section and unloading section.
3. Main drive is chain drive and stepless speed regulation
4. The machine is designed as two-step washing and equipped with two water tanks and high pressure pump.
5. The machine has five pairs of brushes and four pairs of sponge rollers.

建筑 家私 包装 清洗机 系列

ARCHITECTURE / FURNITURE / PACKING GLASS WASHING MACHINE SERIES



技术参数 Technical Parameters

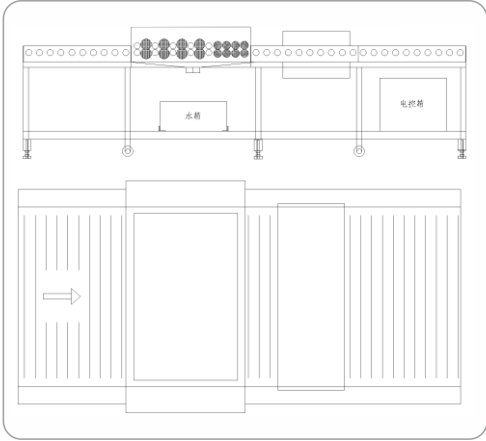
序号	标识名称 Description	Model	JYX-1600C	JYX-1200C	JYX-1200CZ
1	传动速度 Working Speed		0-3.5m/min	0-3.5m/min	0-3.5m/min
2	最大尺度 Max. Width		1600mm	1200mm	1200mm
3	最小尺寸 Min. Size		200X200mm	150X150mm	70X70mm
4	加工厚度 Thickness Range		3-12	3-12	3-12
5	总功率 Total Power		15	12	12
6	设备尺寸 Machine Size		4000X2150X1000	3300X1750X1100	3300X1750X1100
7	重量 Machine Weight		1000	800	800
8	日光灯检测灯 Light Inspection		●	●	×
9	电源 Power Supply		●	●	●
10	热风开关 Air Heater Switch		●	●	●

序号	标识名称 Description	Model	JYX-1600C	JYX-1200C	JYX-1200CZ
11	风机开关 Blower Switch		●	●	●
12	水泵开关 Water Pump Switch		●	●	●
13	毛刷 Brush Diameter		Φ80	Φ80	Φ60
14	胶辊尺寸 Rubber Roller Diameter		Φ50	Φ50	Φ50
15	传动 Speed		无级变速 Stepless Regulation	无级变速 Stepless Regulation	无级变速 Stepless Regulation
16	工作水平高度 Working Height		830	830	830

● 表示有此配备 | ○ 表示选装配备 | × 表示无此配备
MEAN "YES" | MEAN "OPTIONAL" | MEAN "NO"

产品特性

- 1、玻璃清洗机采用卧式结构、用于平板玻璃的清洗与干燥。
- 2、主要由进片段、清洗段、干燥段、出片段组成。
- 3、主传动为链条传动。
- 4、四对毛刷、四对海绵辊、一个水箱配置。



Product Characteristics

- 1. Horizontal glass washing machine is used for flat glass washing and drying.
- 2. The machine mainly consists of loading section, washing section, drying section and unloading section.
- 3. Main drive is chain drive.
- 4. The machine has four pairs of brushes, four pairs of sponge rollers and one tank.

灯饰 工艺 清洗机 系列

LIGHTING/ART GLASS WASHING MACHINE SERIES



技术参数 Technical Parameters

序号	标识名称 Description	Model	JYX-800CS	JYX-800CS2	JYX-800CS3
1	传动速度 Working Speed		0-3.5m/min	0-3.5m/min	0-3.5m/min
2	最大尺度 Max. Width		800mm	800mm	800mm
3	最小尺寸 Min. Size		50x50mm	50x50mm	50x50mm
4	加工厚度 Thickness Range		3-12	3-12	3-12
5	总功率 Total Power		13	15	15
6	设备尺寸 Machine Size		2400X1350X1000	2600X1350X1100	2900X1350X1100
7	重量 Machine Weight		600	700	800
8	电源 Power Supply		●	●	●
9	热风开关 Air Heater Switch		●	●	●
10	风机开关 Blower Switch		●	●	●

序号	标识名称 Description	Model	JYX-800CS	JYX-800CS2	JYX-800CS3
11	水泵开关 Water Pump Switch		●	●	●
12	毛刷 Brush Diameter		Φ80	Φ80	Φ80
13	胶辊尺寸 Rubber Roller Diameter		Φ50	Φ50	Φ50
14	传动变频 Speed Inverter		○	○	●
15	工作水平高度 Working Height		830	830	830

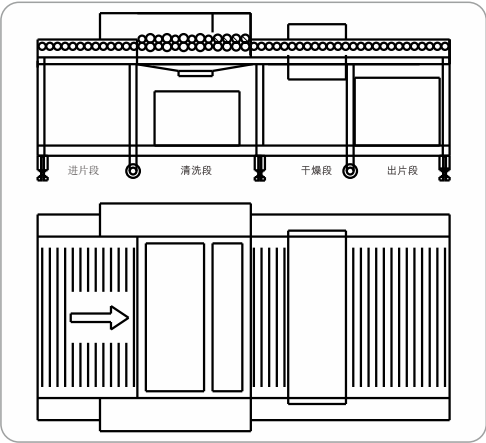
● 表示有此配备
MEAN"YES" | ○ 表示选装配备
MEAN"OPTIONAL" | ✕ 表示无此配备
MEAN "NO"

产品特性

玻璃清洗机采用卧式结构、用于平板玻璃的清洗与干燥。
主要由进片段、清洗段、干燥段、出片段组成。主传动为链条传动。
四对毛刷、四对海绵辊、一个水箱配置。

Product Characteristics

- 1. Horizontal glass washing machine is used for flat glass washing and drying.
- 2.The machine mainly consists of loading section, washing section, drying section and unloading section.
- 3.Main drive is chain drive.
- 4.The machine has four pairs of brushes, four pairs of sponge rollers and one water tank.



电子 家电清洗机 系列

ELECTRONIC/HOME ELECTRICAL APPLIANCES
GLASS WASHING MACHINE SERIES



产品特性

玻璃清洗机采用卧式结构、用于平板玻璃的清洗与干燥。
主要由进片段、清洗段、干燥段、出片段组成。
主传动为轴传动、变频调速。
四对毛刷、二对风刀、三个水箱配置。

Product Characteristics

- 1. The horizontal glass washing machine is used for flat glass washing and drying.
- 2. The machine mainly consists of loading section, washing section, drying section and unloading section.
- 3. Main drive is gear drive and inverter speed control.
- 4. The machine has four pairs of brushes, two pairs of air knife, and three water tanks.

技术参数 Technical Parameters

序号	标识名称 Description	Model	JYX-800CE	JYX-1200CE	JYX-1600CE
1	传动速度 Working Speed		0-5m/min	0-5m/min	0-5m/min
2	最大尺度 Max. Width		800mm	1200mm	1600mm
3	最小尺寸 Min. Size		250X250mm	250X250mm	250X250mm
4	加工厚度 Thickness Range		3-6	3-6	3-6
5	总功率 Total Power		15	15	15
6	设备尺寸 Machine Size		3800X2000X1200	4300X2400X1200	4500X2800X1200
7	重量 Machine Weight		1200	1500	1800
8	日光灯检测灯 Light Inspection		●	●	●
9	电源 Power Supply		●	●	●
10	热风开关 Air Heater Switch		●	●	●

序号	标识名称 Description	Model	JYX-800CE	JYX-1200CE	JYX-1600CE
11	风机开关 Blower Switch		●	●	●
12	水泵开关 Water Pump Switch		●	●	●
13	毛刷 Brush Diameter		Φ80	Φ80	Φ80
14	胶辊尺寸 Rubber Roller Diameter		Φ50	Φ50	Φ50
15	传动变频 Speed Inverter		●	●	●
16	毛刷变频 Brush Inverter		●	●	●
17	过滤器 Water Filter		●	●	●
18	工作水平高度 Working Height		900	900	900

●表示有此配备 MEAN"YES" | ○表示选装配备 MEAN"OPTIONAL" | ✕表示无此配备 MEAN "NO"

酸碱清洗机
ACID OR ALKALI GLASS WASHING MACHINE



产品特性

玻璃清洗机采用卧式结构、用于平板玻璃
的清洗与干燥。
主要由进片段、清洗段、干燥段、出片段组成。
主传动为轴传动、变频调速。
四对毛刷、二对风刀、三个水箱配置。

Product Characteristics

- 1. Horizontal glass washing machine is used for flat glass washing and drying.
- 2. The machine mainly consists of loading section, washing section, drying section and unloading section.
- 3. Main drive is gear drive and inverter speed control.
- 4. The machine has four pairs of brushes, two pairs of air knife, and three water tanks.

技术参数 Technical Parameters

序号	标识名称 Description	Model	JYX-800D	JYX-1200D	JYX-1600D
1	传动速度 Working Speed		0-5m/min	0-5m/min	0-5m/min
2	最大尺度 Max. Width		800mm	1200mm	1600mm
3	最小尺寸 Min. Size		250X250mm	250X250mm	250X250mm
4	加工厚度 Thickness Range		3-6	3-6	3-6
5	总功率 Total Power		15	15	15
6	设备尺寸 Machine Size		4200X1900X1200	4200X2400X1200	4200X2800X1200
7	重量 Machine Weight		1200	1500	1800
8	日光灯检测灯 Light Inspection		●	●	●
9	电源 Power Supply		●	●	●
10	热风开关 Air Heater Switch		●	●	●

序号	标识名称 Description	Model	JYX-800CE	JYX-1200CE	JYX-1600CE
11	风机开关 Blower Switch		●	●	●
12	水泵开关 Water Pump Switch		●	●	●
13	毛刷 Brush Diameter		Φ80	Φ80	Φ80
14	胶辊尺寸 Rubber Roller Diameter		Φ50	Φ50	Φ50
15	传动变频 Speed Inverter		●	●	●
16	毛刷变频 Brush Inverter		●	●	●
17	工作水平高度 Working Height		900	900	900

●表示有此配备 MEAN"YES" | ○表示选装配备 MEAN"OPTIONAL" | ✕表示无此配备 MEAN "NO"

TFT玻璃清洗机 系列

TFT GLASS WASHING MACHINE



TFT –G4.5 镀膜前清洗机

TFT -G4.5 Glass Washing Machine before Coating

清洗规格	基板厚度(mm)	输送速度(M/Min)	功率(kw)	耗水量L/Min	设备结构	输送间距(mm)	输送高度(mm)
Glass Size Range	Glass Thickness	Working Speed	Total Power	Water Consumption	Machine Structure	Distance Between Rollers	Working Height
730X920	0.25~1.1	1~6	30~50	20~40	PVC/SUS	50~70	950

TFT玻璃清洗机 系列

TFT GLASS WASHING MACHINE



TFT-G5.5 蚀刻后清洗机

TFT-G5.6 Acid-etched Glass Washing Machine

清洗规格	基板厚度(mm)	输送速度(M/Min)	功率(kw)	耗水量L/Min	设备结构	输送间距(mm)	输送高度(mm)
Glass Size Range	Glass Thickness	Working Speed	Total Power	Water Consumption	Machine Structure	Distance Between Rollers	Working Height
1100x1300	0.25~1.1	1~6	45~50	30~50	PVC/SUS	50~70	1000

TFT玻璃清洗机 系列

TFT GLASS WASHING MACHINE



TFT-G6 抛光后清洗机

TFT-G6 Polished Glass Washing Machine

清洗规格	基板厚度(mm)	输送速度(M/Min)	功率(kw)	耗水量(L/Min)	设备结构	输送间距(mm)	输送高度(mm)
Glass Size Range	Glass Thickness	Working Speed	Total Power	Water Consumption	Machine Structure	Distance Between Rollers	Working Height
1500-1850	0.25-1.1	1-6	50-75	40-60	PVC/SUS	50-80	1200

TFT/LCD玻璃清洗机 系列

TFT GLASS WASHING MACHINE



TFT/LCD -G8 镀膜前清洗机

TFT/LCD -G8 Glass Washing Machine before Coating

清洗规格	基板厚度(mm)	输送速度(M/Min)	功率(kw)	耗水量(L/Min)	设备结构	输送间距(mm)	输送高度(mm)
Glass Size Range	Glass Thickness	Working Speed	Total Power	Water Consumption	Machine Structure	Distance Between Rollers	Working Height
2200x2500	0.4-3	1-6	60-90	50-75	PVC/SUS	60-80	1300